

Light efficiency:



Light quality:



Color temperature:



Output: 5808 lm
Peak: 614105 cd
Power: 370 W
PF: n/a

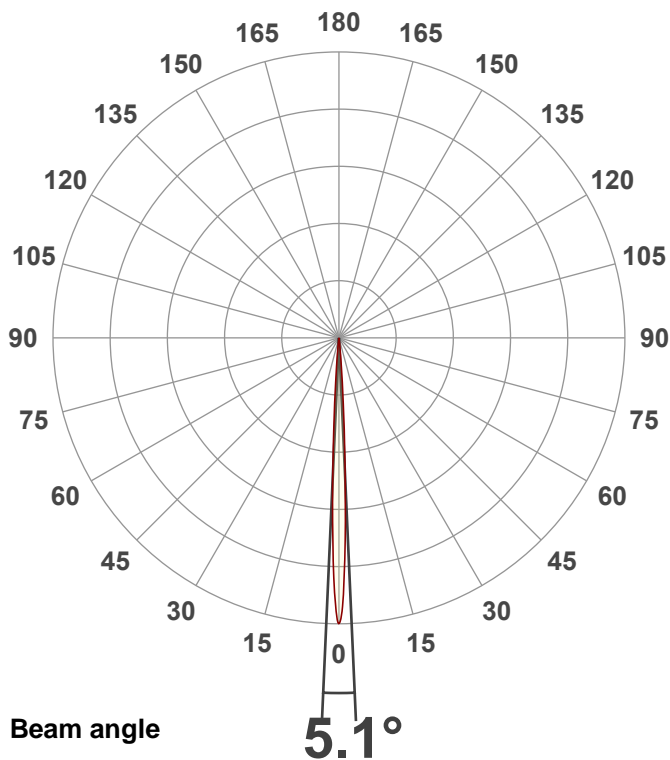


Tracking number: [n/a](#)

Product name:
Vizi Beam CMY
 Item number:
Frost

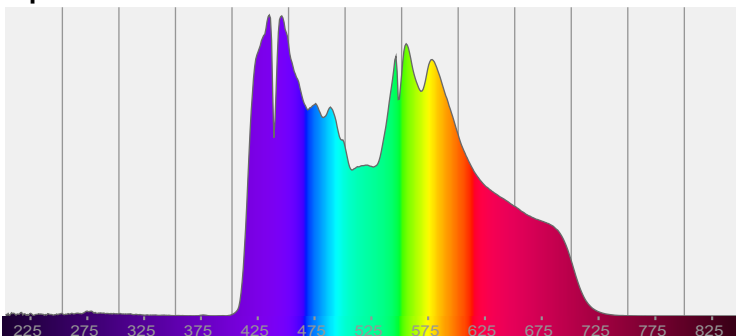
Date and time:
7/30/2024 3:16:50 PM

Description:

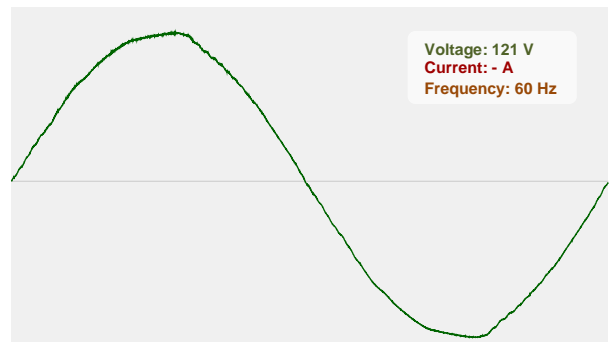


CIE 1931
 x: 0.310
 y: 0.317

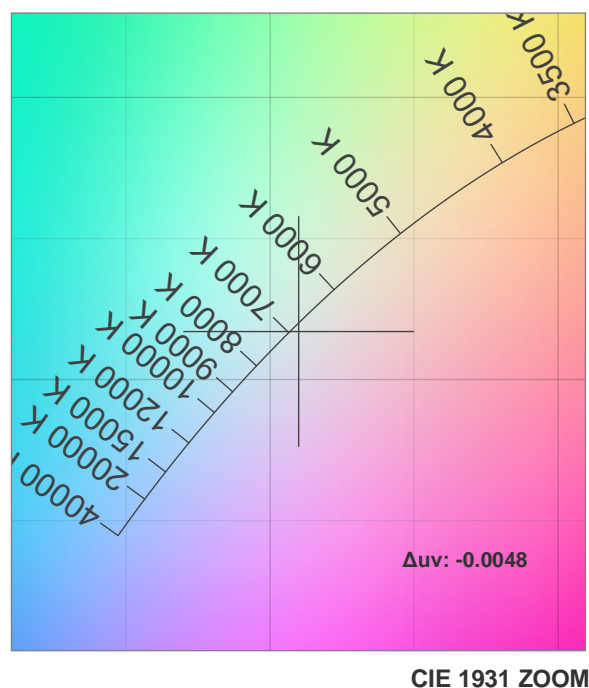
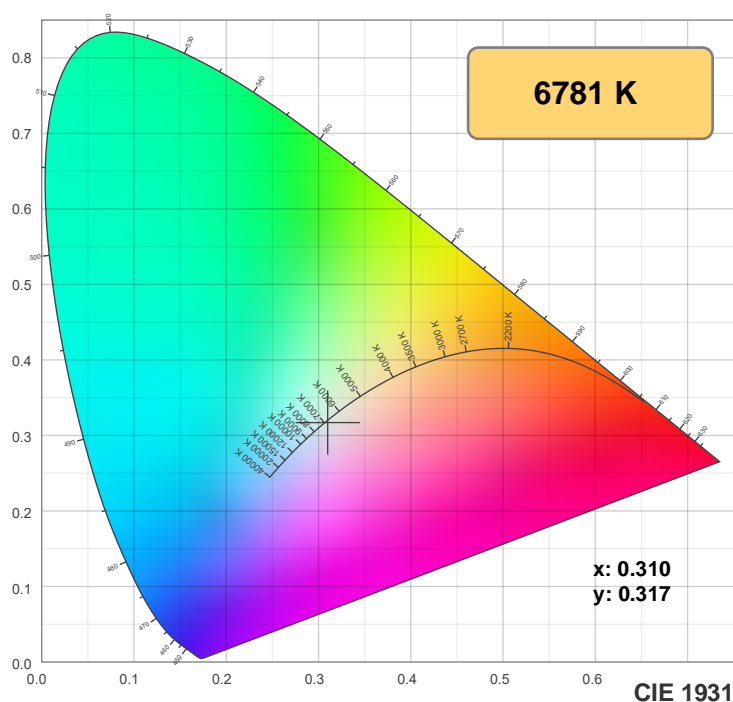
Spectra



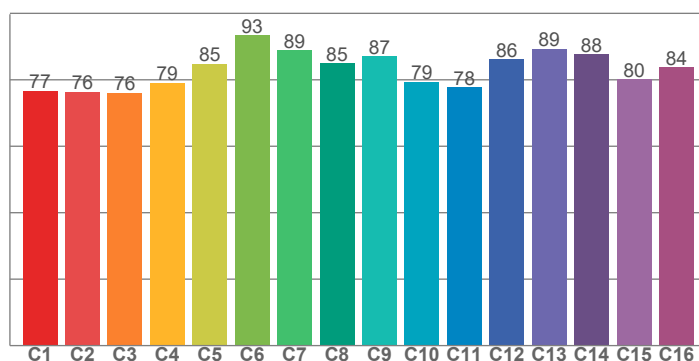
Power



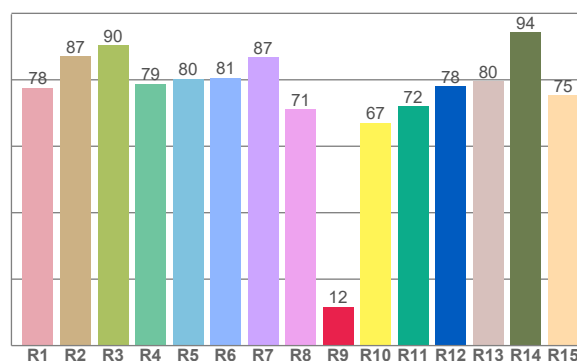
Color details



TM-30: 83.1



CRI: 81.6 (R1-R8)



CRI R values, only R1-R8 are used to calculate final CRI value

R1	R2	R3	R4	R5	R6	R7	R8	R9	R10	R11	R12	R13	R14	R15
77.6	87.1	90.4	78.8	80.3	80.6	86.9	71.0	11.6	67.0	72.1	78.2	79.6	94.2	75.3

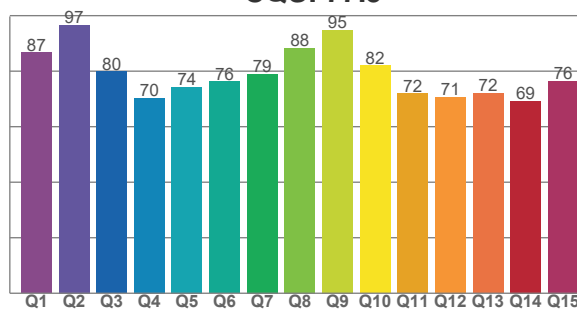
TM30 C values, 16 binned values out of total of 99 C values

C1	C2	C3	C4	C5	C6	C7	C8	C9	C10	C11	C12	C13	C14	C15	C16
76.6	76.4	76.1	79.0	84.8	93.4	88.8	84.9	87.1	79.4	77.7	86.2	89.3	87.6	80.2	83.7

CQS Q values

Q1	Q2	Q3	Q4	Q5	Q6	Q7	Q8	Q9	Q10	Q11	Q12	Q13	Q14	Q15
86.7	96.6	79.8	70.3	74.3	76.3	78.9	88.3	94.9	82.0	72.0	70.7	72.0	69.2	76.4

CQS: 77.5



Color parameters

Color temperature	Color rendering index	Red component	Color fidelity	Color gamut	Color quality scale	Color coordinate cie 1931	Color coordinate cie 1931	Color coordinate	Color coordinate	Color deviation from black body
CCT	CRI	CRI R9	TM30 Rf	TM30 Rg	CQS	x	y	u	v	Δuv
6781 K	81.6	11.6	83.1	94.3	77.5	0.310	0.317	0.200	0.308	-0.0048

TM-30 details

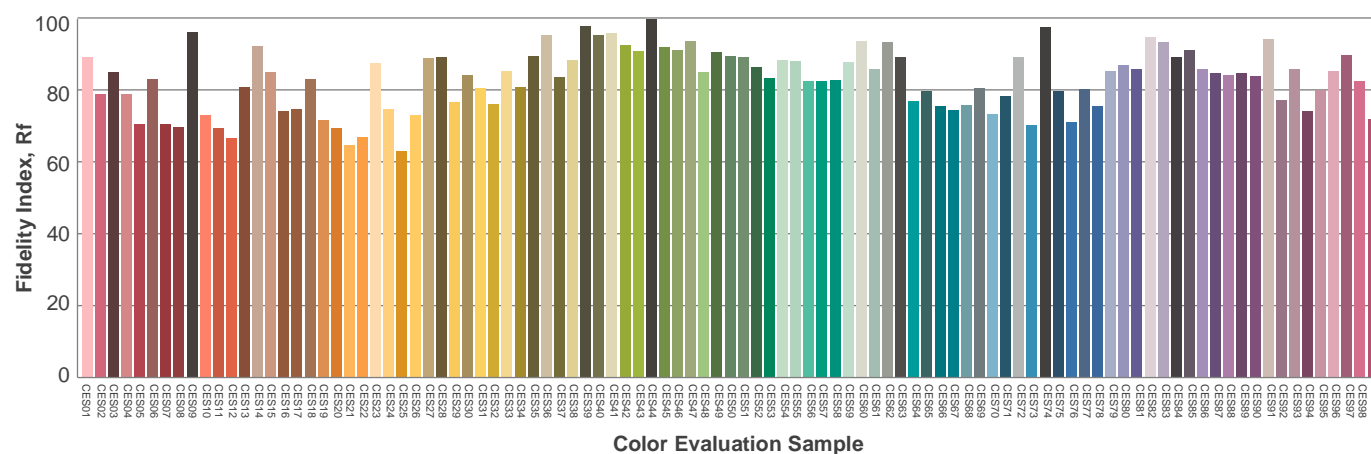
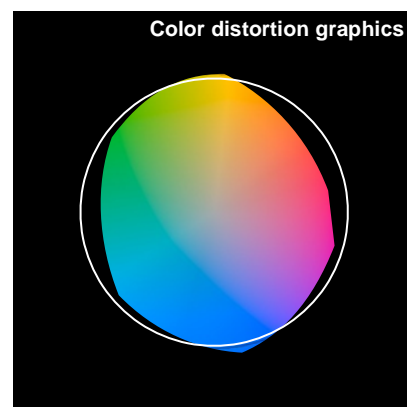
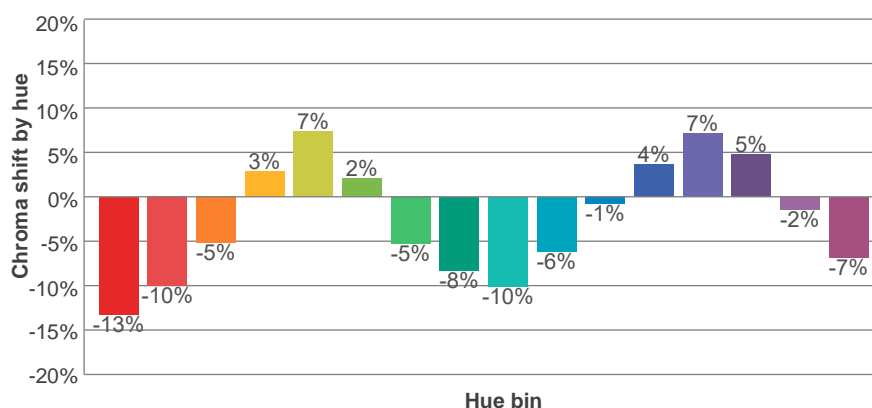
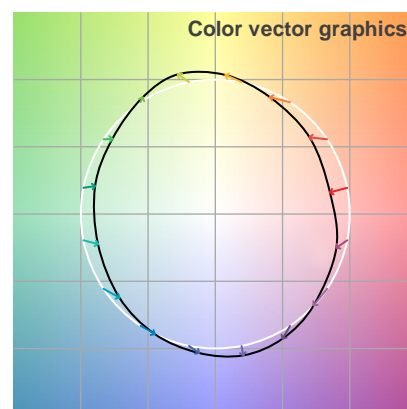
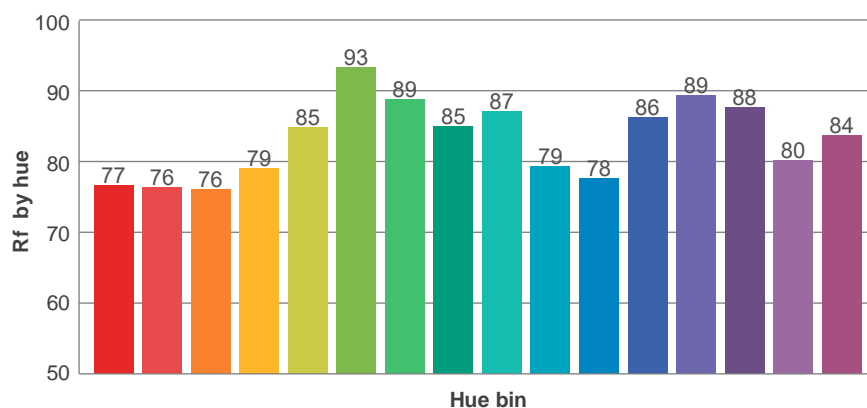
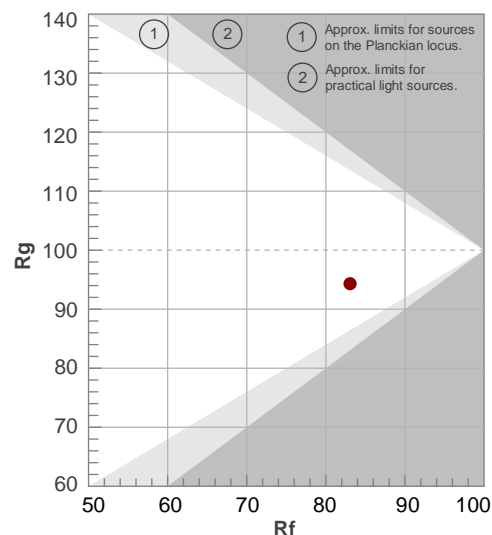
Rf 83.1

Fidelity index Rf

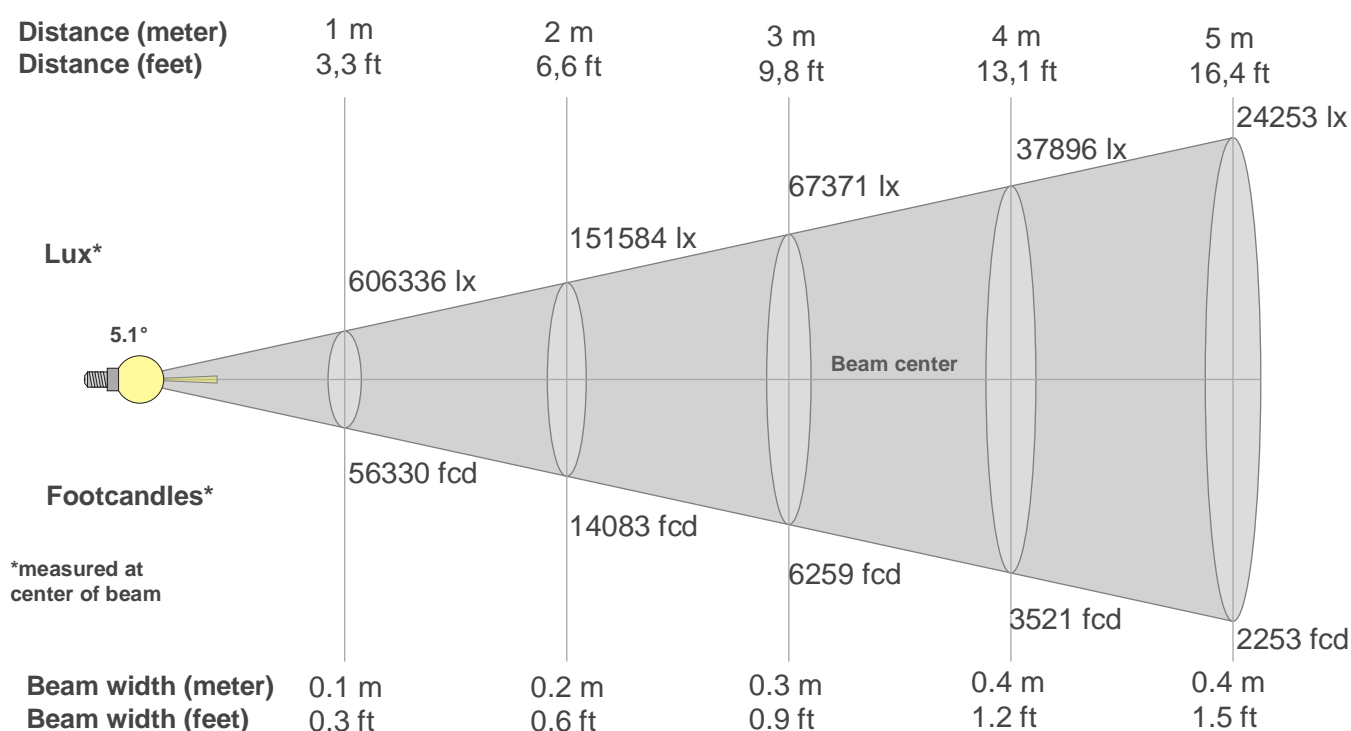
Rg 94.3

Gamut index Rg

Hue Bin	R _f	Shifts (%)	
		Chroma	Hue
1	77	-13%	-1%
2	76	-10%	9%
3	76	-5%	14%
4	79	3%	13%
5	85	7%	7%
6	93	2%	-3%
7	89	-5%	-4%
8	85	-8%	-3%
9	87	-10%	5%
10	79	-6%	12%
11	78	-1%	12%
12	86	4%	8%
13	89	7%	0%
14	88	5%	-10%
15	80	-2%	-16%
16	84	-7%	-7%



Beam details



Beam intensities from 1-20m

1m	2m	3m	4m	5m	6m	7m	8m	9m	10m	11m	12m	13m	14m	15m	16m	17m	18m	19m	20m
3.3ft	6.6ft	9.8ft	13.1ft	16.4ft	19.7ft	23ft	26.2ft	29.5ft	32.8ft	36.1ft	39.4ft	42.7ft	45.9ft	49.2ft	52.5ft	55.8ft	59.1ft	62.3ft	65.6ft
606336lx	151584lx	67371lx	37896lx	24253lx	16843lx	12374lx	9474lx	7486lx	6063lx	5011lx	4211lx	3588lx	3094lx	2695lx	2368lx	2098lx	1871lx	1680lx	1516lx
56330.4fcd	14082.6fcd	6258.9fcd	3520.7fcd	2253.2fcd	1564.7fcd	1149.6fcd	880.2fcd	695.4fcd	563.3fcd	465.5fcd	391.2fcd	333.3fcd	287.4fcd	250.4fcd	220fcd	194.9fcd	173.9fcd	156fcd	140.8fcd

Intensities in 0° c-plane

0°	1°	2°	3°	4°	5°	6°	7°	8°	9°	10°	11°	12°	13°	14°	15°	16°	17°	18°	19°
606K	547K	398K	240K	124K	55K	22K	8K	2K	0K	0K	0K	0K	0K	0K	0K	0K	0K	0K	0K
100%	90%	66%	40%	20%	9%	4%	1%	0%	0%	0%	0%	0%	0%	0%	0%	0%	0%	0%	0%

Intensities in 90° c-plane

0°	1°	2°	3°	4°	5°	6°	7°	8°	9°	10°	11°	12°	13°	14°	15°	16°	17°	18°	19°
606K	547K	398K	240K	124K	55K	22K	8K	2K	0K	0K	0K	0K	0K	0K	0K	0K	0K	0K	0K
100%	90%	66%	40%	20%	9%	4%	1%	0%	0%	0%	0%	0%	0%	0%	0%	0%	0%	0%	0%

Intensities in 180° c-plane

0°	1°	2°	3°	4°	5°	6°	7°	8°	9°	10°	11°	12°	13°	14°	15°	16°	17°	18°	19°
606K	541K	393K	236K	120K	54K	22K	8K	2K	0K	0K	0K	0K	0K	0K	0K	0K	0K	0K	0K
100%	89%	65%	39%	20%	9%	4%	1%	0%	0%	0%	0%	0%	0%	0%	0%	0%	0%	0%	0%

Intensities in 270° c-plane

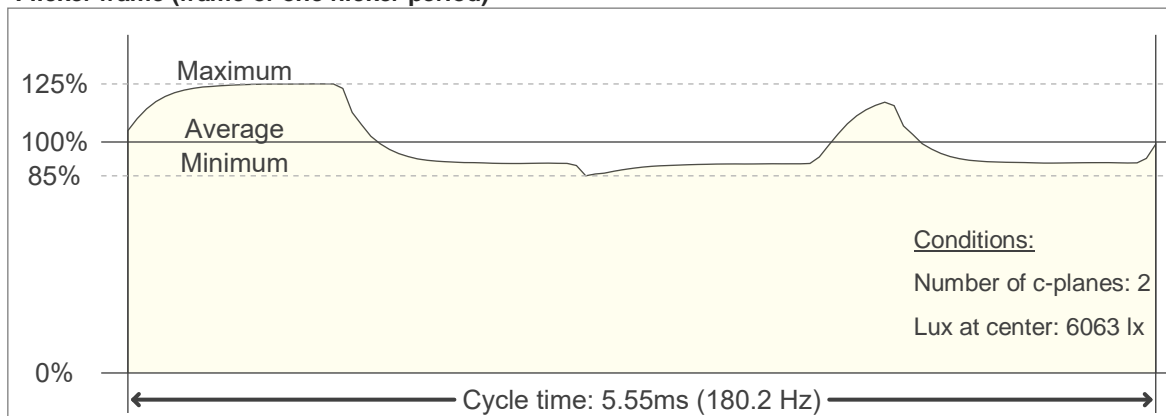
0°	1°	2°	3°	4°	5°	6°	7°	8°	9°	10°	11°	12°	13°	14°	15°	16°	17°	18°	19°
606K	541K	393K	236K	120K	54K	22K	8K	2K	0K	0K	0K	0K	0K	0K	0K	0K	0K	0K	0K
100%	89%	65%	39%	20%	9%	4%	1%	0%	0%	0%	0%	0%	0%	0%	0%	0%	0%	0%	0%

Beam angle 50%	Field angle 10%	Cutoff angle 2,5%	Intensity ratio in 120° cone	Intensity ratio in 90° cone
5.1°	9.7°	12.7°	100.0%	100.0%

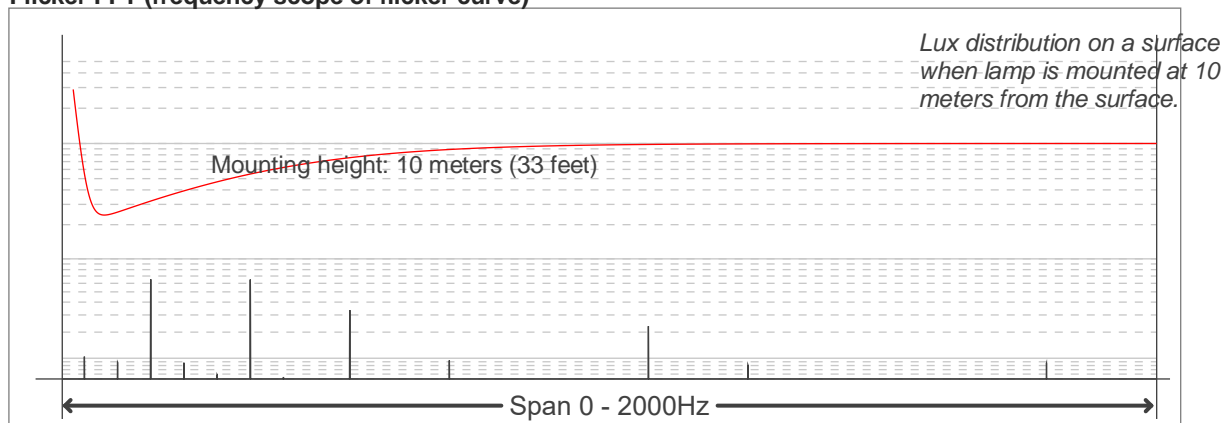
Flicker



Flicker frame (frame of one flicker period)



Flicker FFT (frequency scope of flicker curve)



Flicker results:

Flicker frequency:		180.18 Hz	
Flicker index:	0.06	JA8/10 40Hz	0.43 %
Flicker percentage:	22.85 %	JA8/10 90Hz	2.29 %
SVM: (Visual flicker)	0.4	JA8/10 200Hz	16.96 %
PstLM	0.14	JA8/10 400Hz	24.99 %
Mp	0.1	JA8/10 1000Hz	23.54 %

Flicker conditions:

Sample rate:	20000 samples/second
--------------	----------------------